

AÇO	DIAM	C.TOTAL (m)	PESO+10% (kg)
CASO	8.0	161.9	70.4
CA60	5.0	213.6	36.2
PESO TOTAL			
CASO	70.4		
CA60	36.2		

Volume de concreto total = 1.55 m³  
Área de forma total = 25.80 m²  
fck = 200.00 kgf/cm²

AÇO	N	DIAM	Q	UNIT (cm)	C.TOTAL (cm)
60 50	1	5.0	247	86	21242
	2	8.0	4	928	3712
	3	8.0	4	936	3744
	4	8.0	12	363	4356
	5	8.0	4	371	1484
	6	8.0	2	372	744
	7	8.0	2	374	748
	8	8.0	1	250	250
	9	8.0	3	360	1140

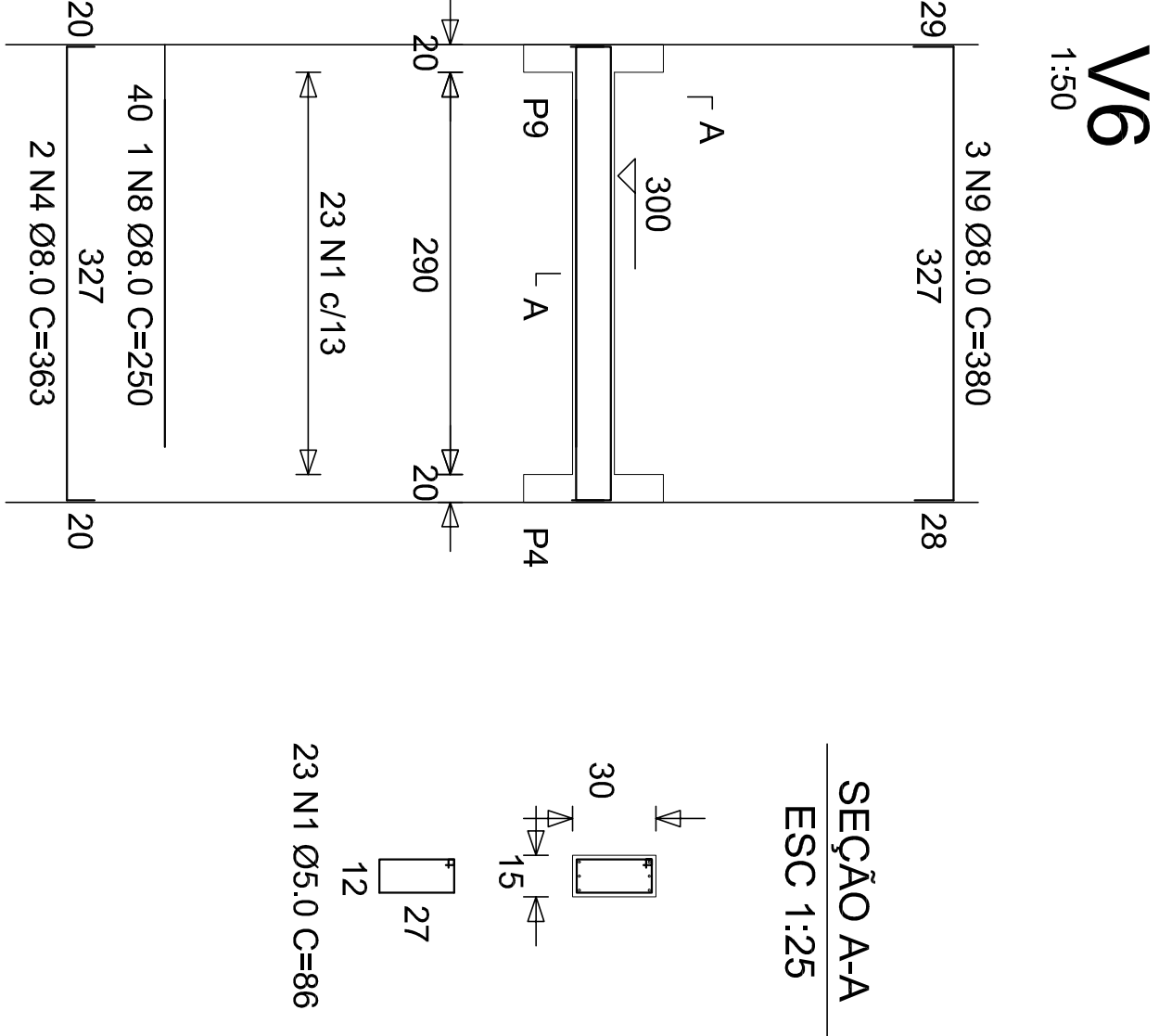
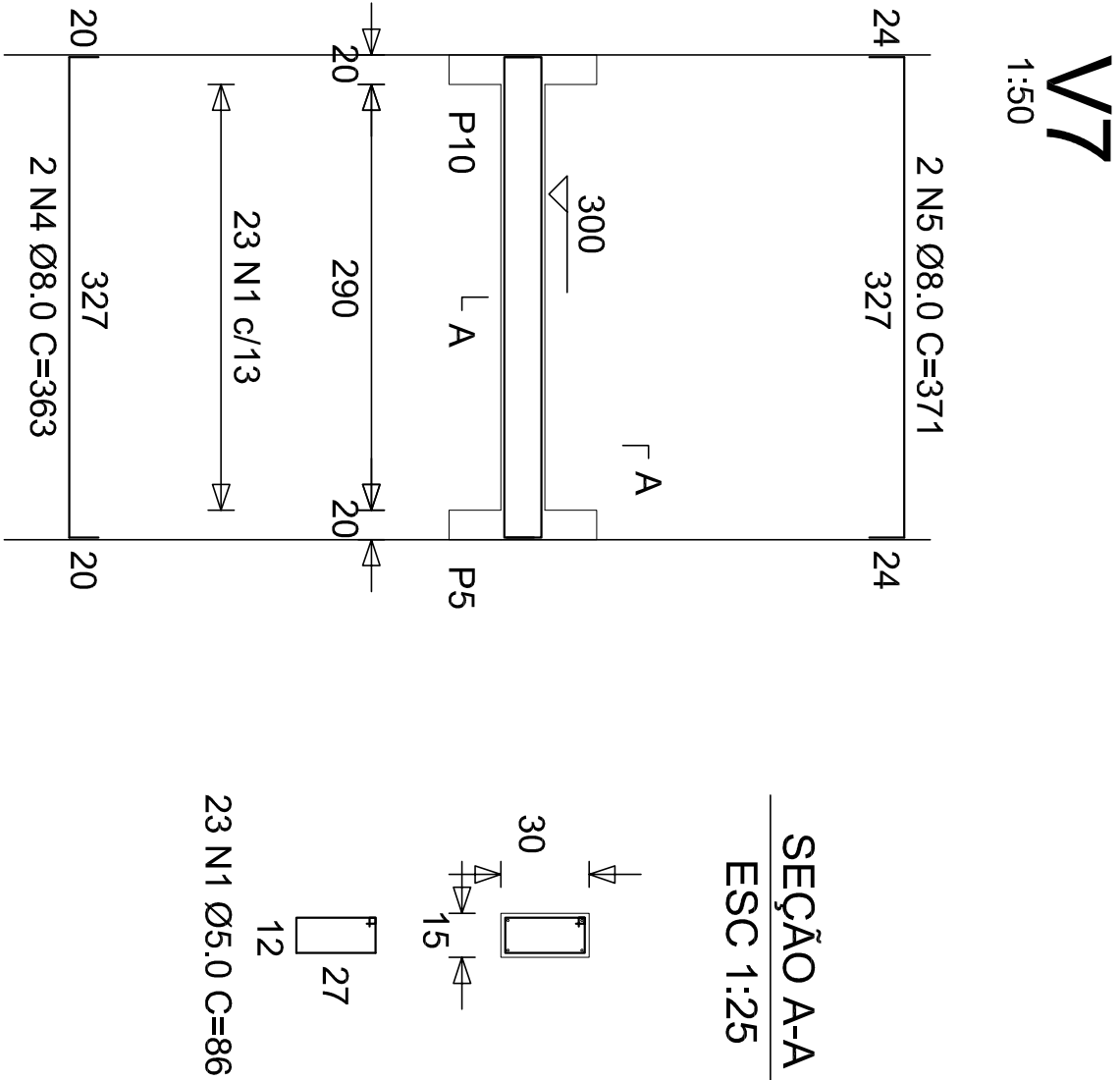
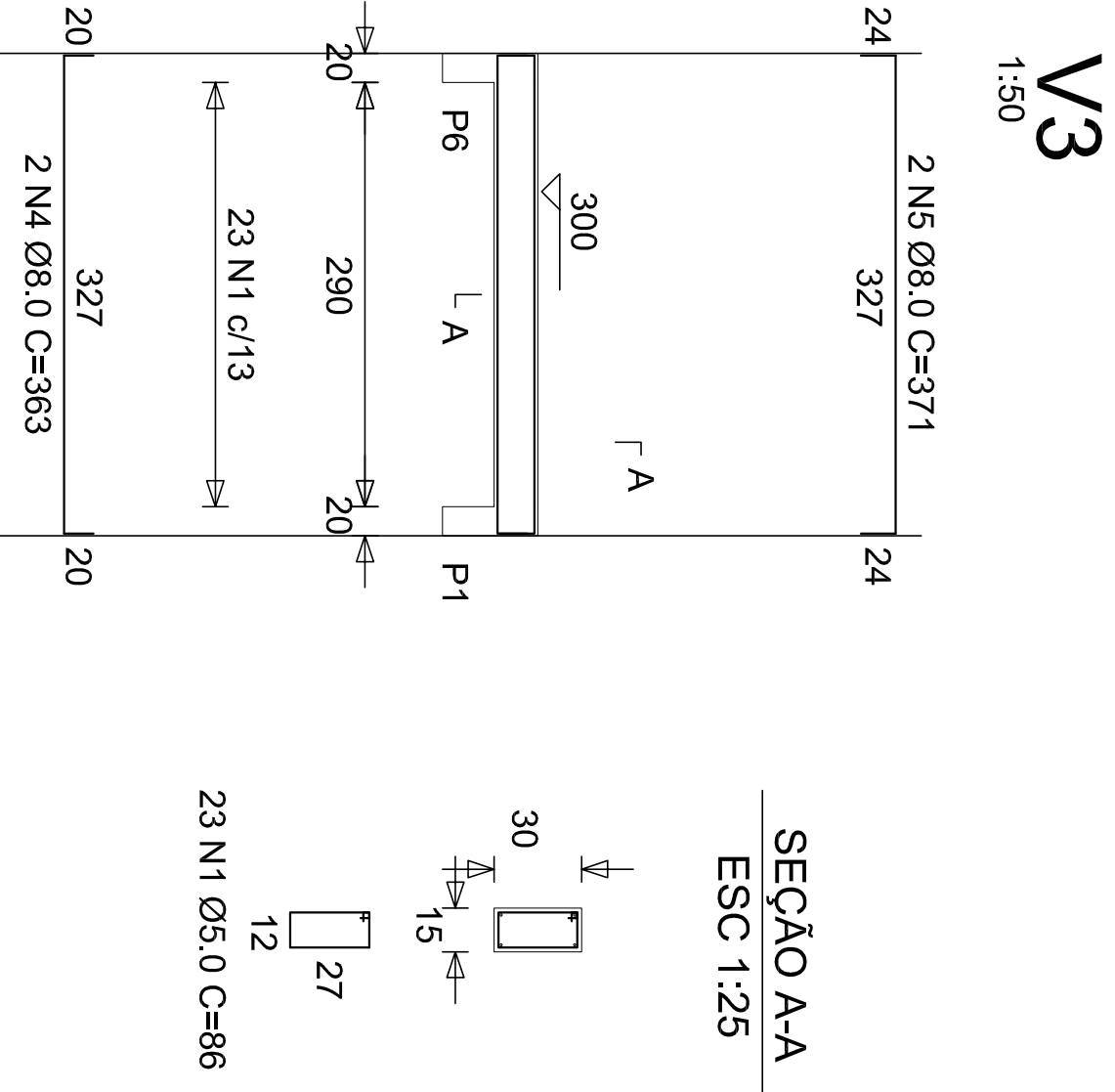
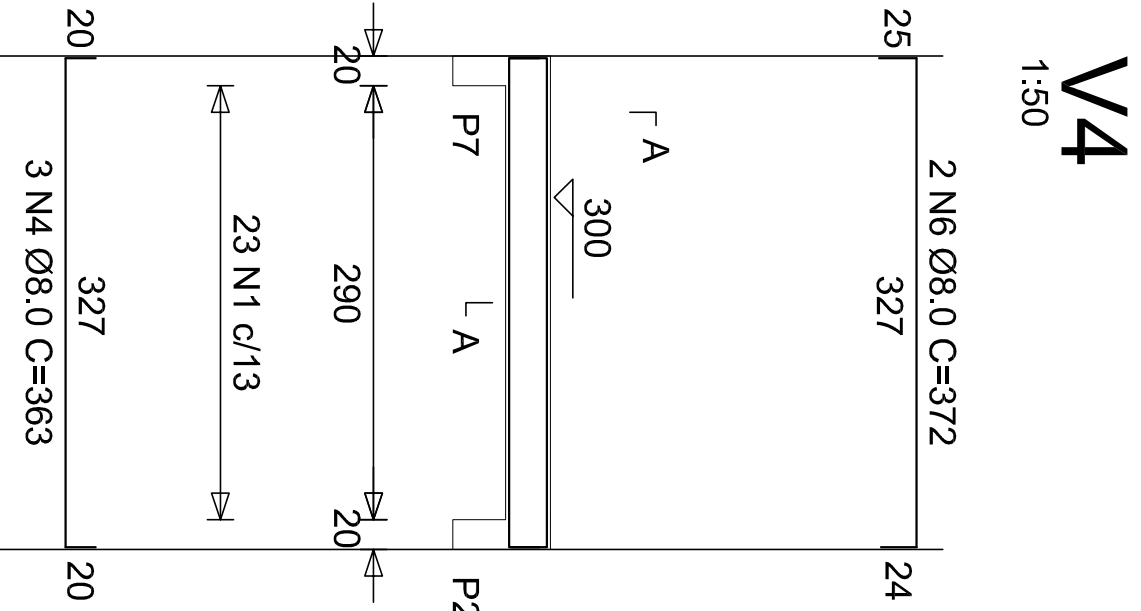
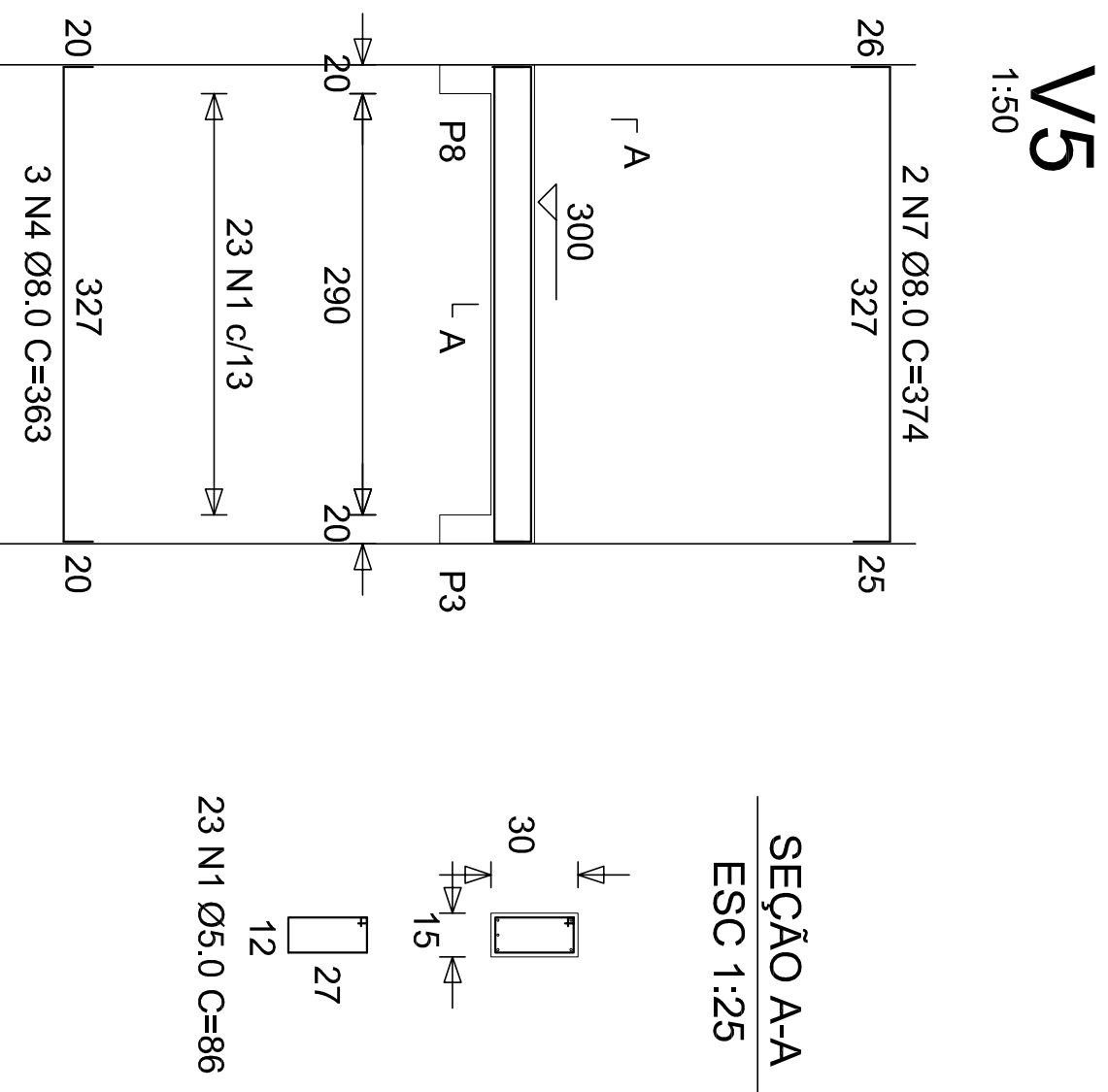
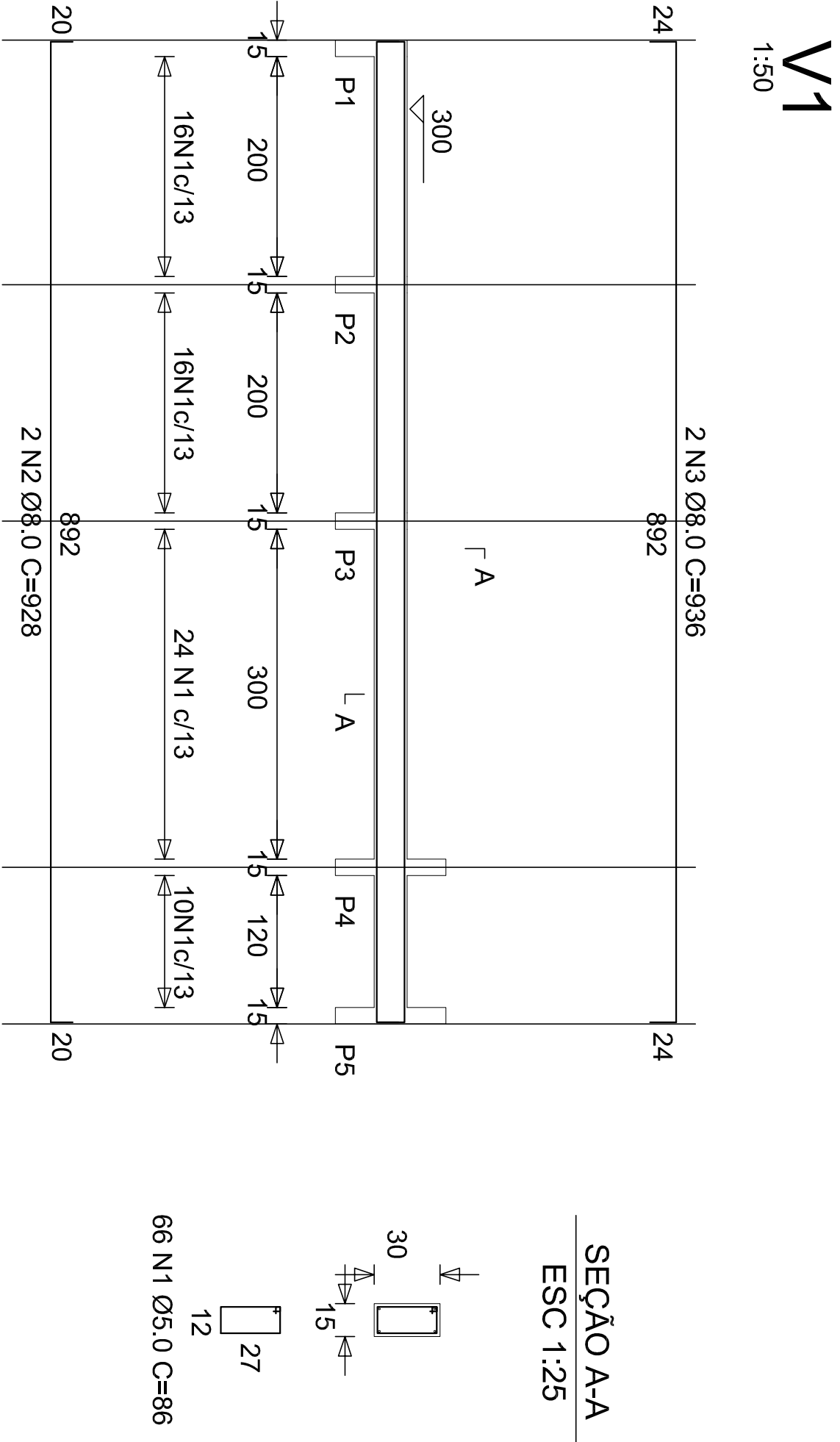
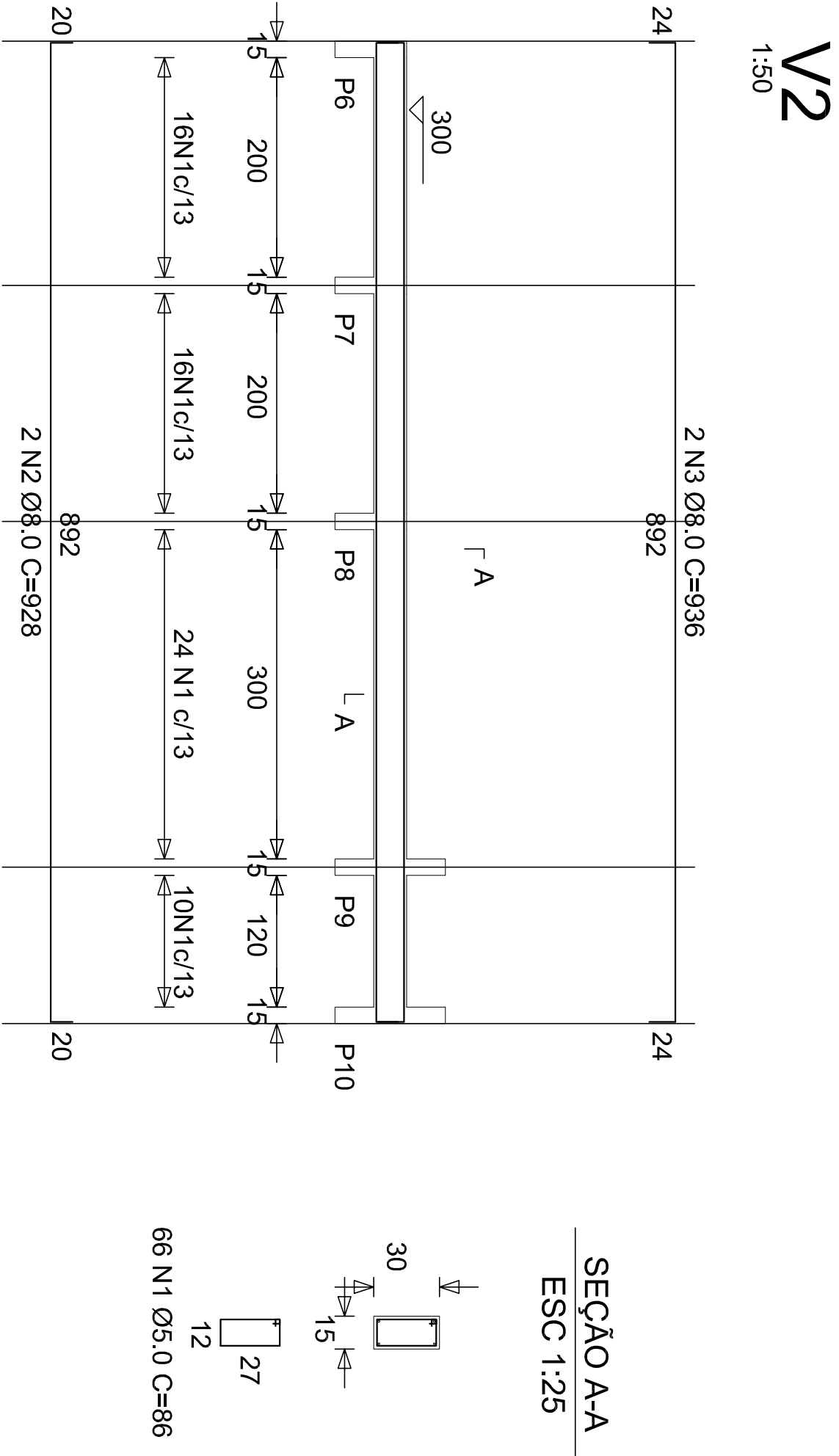
RESUMO DO AÇO

RELAÇÃO DO AÇO

V1  
V4  
V7

V2  
V5

V3  
V6



AMASH ASSOCIAÇÃO DOS MUNICÍPIOS DA MICROREGIÃO DO ALTO SÃO FRANCISCO				PREFEITURA MUNICIPAL DE	
RESPONSÁVEL TÉCNICO		ASSINATURA:		VISTO PRELIMINAR	
Vicente de Paulo Poalimelli Raposo				SEC. EXECUTIVO	
CREA 2.220-D/MS - Visto 11.014/MG		DATA:		ELENCO	
U. P. P. T.		fevereiro de 2007		SECRET. GERAL	
LUZ				INDICADA	
TRATAMENTO DE ESCOTOS ESTHUTURAL - APOLO				PRELIMINAR	
E.T.E. ESTRUTURAL - APOLO - Vigas de Laje				TOTAL	
				33	